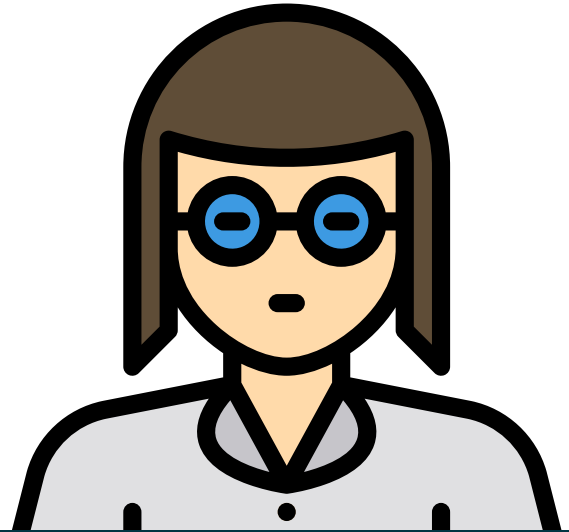


Sign up and receive  
8 Energy Saving Bulbs  
**Free of Charge**

*(potential saving of £108.84 per year)*



# Recharge & take care of your energy bills

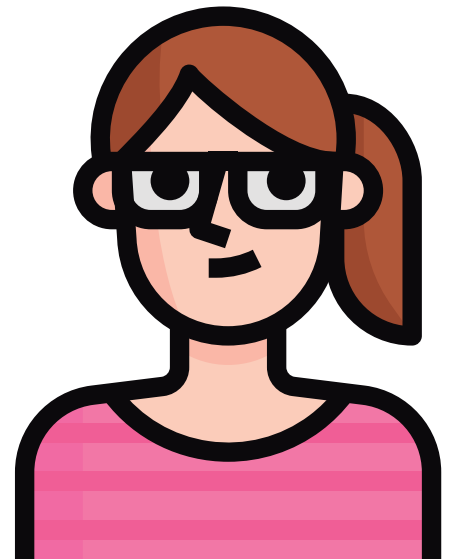
Empowering energy consumers  
with disabilities or long-term  
health conditions and helping  
to reduce fuel poverty

Does your organisation offer help and advice to people who are disabled or suffer with long-term health conditions? If so, we need to talk!

**Recharge** is a free scheme designed to empower people to make educated choices regarding their bills and ultimately saving them time and money.

Delivered by Live Inclusive, It's our mission to help 620 households over the next 2 years and reduce fuel poverty in Doncaster and Rotherham.

Anyone with a disability or long-term health condition can apply. You do not need to be registered disabled and it can be a self-diagnosed condition which could be physical or hidden.



## Facts

- According to SCOPE's Out in the Cold Report (March 2018) over a third of disabled adults say their disability or condition has significant impact on their energy costs and over half (55%) are worried about paying their energy bills.
- 4.1 million households with a disabled person spend over £1,500 per year on energy whilst the average UK household spends around £1,200 per year.
- There are more than 900,000 households with a disabled person in England, living in fuel poverty (defined by above-average fuel costs which would push them below the poverty line).

Funded by

**The Energy Industry Voluntary Redress Scheme**

[www.energyredress.org.uk](http://www.energyredress.org.uk)

**The Screwfix Foundation**



**Recharge** Empowering energy consumers with disabilities or long-term health conditions and helping to reduce fuel poverty

## Benefits

- Receive 8 Free LED Energy Saving Bulbs (*potential saving of £108.84 per year*)
- Help you to manage your energy bills
- Provide guidance on tariffs and the use of energy comparison websites
- 1 to 1 support with switching energy providers (*saving up to £300 per year*)
- Assist in identifying the most appropriate method of bill payment and budgeting your finances to ensure you can pay the bills
- Apply for Priority Services Registration
- Inform you of the different schemes available such as; Warm Homes Discount Schemes, Cold Weather payments and Winter Fuel payments
- Energy saving tips (*potential total savings £238 per year*)
- Carry out small draught proofing measures where appropriate
- Identify where the client might need other support and refer where appropriate

## Safety

It's our primary concern and under normal circumstances we would be visiting customers in their homes, but for the time being our initial assessment and follow ups will be carried out in your garden or available outdoor space. Alternatively, we can do this by telephone, video call or email.

**A full risk assessment will be carried out prior to any visits in line with all COVID-19 safety protocols to ensure your safety and wellbeing.**

Both Doncaster and Rotherham have their own dedicated Energy Awareness Support Workers so please get in touch!

**If you live in Doncaster please contact Nicola on 07545 436 383**

or email [Nicola@liveinclusive.co.uk](mailto:Nicola@liveinclusive.co.uk)

Available Mondays, Tuesdays and Fridays

**If you live in Rotherham please contact Souria on 07729 283 996**

or email [Souria@liveinclusive.co.uk](mailto:Souria@liveinclusive.co.uk)

Available Tuesdays, Wednesdays and Thursdays



Funded by

**The Energy Industry Voluntary Redress Scheme**

[www.energyredress.org.uk](http://www.energyredress.org.uk)

**The Screwfix Foundation**